

WDR87 Rabbit Polyclonal Antibody

WDR87 Rabbit Polyclonal Antibody

Catalog # AP93368

Product Information

Application	IHC, IF
Primary Accession	Q6ZQQ6
Reactivity	Rat, Human, Mouse
Host	Polyclonal, Rabbit, IgG
Clonality	Polyclonal
Calculated MW	333215

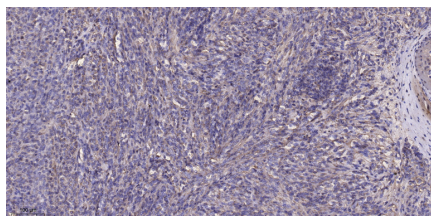
Additional Information

Gene ID	83889
Other Names	WD repeat-containing protein 87, Testis development protein NYD-SP11, WDR87
Dilution	IHC~~1:100~500 IF~~1:50~200
Storage Conditions	-20°C

Protein Information

Name	WDR87
------	-------

Images



Immunohistochemical analysis of paraffin-embedded human Colon cancer. 1, Antibody was diluted at 1:200(4° overnight). 2, Tris-EDTA, pH9.0 was used for antigen retrieval. 3, Secondary antibody was diluted at 1:200(room temperature, 45min).

Please note: All products are 'FOR RESEARCH USE ONLY. NOT FOR USE IN DIAGNOSTIC OR THERAPEUTIC PROCEDURES'.