

KRA14 Rabbit Polyclonal Antibody

KRA14 Rabbit Polyclonal Antibody

Catalog # AP93365

Product Information

Application	WB
Primary Accession	P0C5Y4
Reactivity	Human, Mouse
Host	Polyclonal, Rabbit,IgG
Clonality	Polyclonal
Calculated MW	12324

Additional Information

Gene ID	728255
Other Names	Keratin-associated protein 1-4, High sulfur keratin-associated protein 1.4, Keratin-associated protein 1.4, KRTAP1-4, KAP1.4, KRTAP1.4
Dilution	WB~~1:1000
Storage Conditions	-20°C

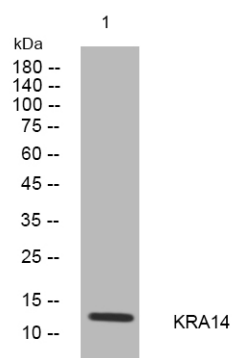
Protein Information

Name	KRTAP1-4
Synonyms	KAP1.4, KRTAP1.4
Function	In the hair cortex, hair keratin intermediate filaments are embedded in an interfilamentous matrix, consisting of hair keratin- associated proteins (KRTAP), which are essential for the formation of a rigid and resistant hair shaft through their extensive disulfide bond cross-linking with abundant cysteine residues of hair keratins. The matrix proteins include the high-sulfur and high-glycine-tyrosine keratins.
Tissue Location	Expressed in the middle/upper portions of the hair cortex, in the region termed the keratogenous zone

Background

The main structural proteins of mammalian hair fiber are the hair keratins (see MIM 601077) and the keratin-associated proteins (KAPs), which form a rigid and resistant hair shaft through extensive disulfide bond crosslinking with the abundant cysteines of hair keratins (Shimomura et al., 2002 [PubMed 12228244]).[supplied by OMIM, Jan 2009],

Images



Western blot analysis of lysates from DU145 cells,
primary antibody was diluted at 1:1000, 4° over night

Please note: All products are 'FOR RESEARCH USE ONLY. NOT FOR USE IN DIAGNOSTIC OR THERAPEUTIC PROCEDURES'.