

COX16 Rabbit Polyclonal Antibody

COX16 Rabbit Polyclonal Antibody

Catalog # AP93363

Product Information

Application	IHC, IF
Primary Accession	Q9P0S2
Reactivity	Human, Mouse
Host	Polyclonal, Rabbit, IgG
Clonality	Polyclonal
Calculated MW	12293

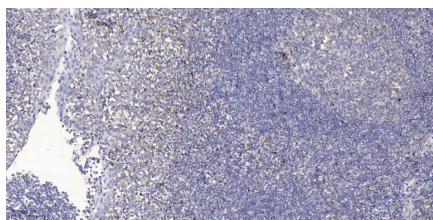
Additional Information

Gene ID	51241
Other Names	Cytochrome c oxidase assembly protein COX16 homolog, mitochondrial, hCOX16, COX16
Dilution	IHC~~1:100~500 IF~~1:50~200
Storage Conditions	-20°C

Protein Information

Name	COX16
Function	Required for the assembly of the mitochondrial respiratory chain complex IV (CIV), also known as cytochrome c oxidase (PubMed: 29355485 , PubMed: 29381136 , PubMed: 33169484). Promotes the insertion of copper into the active site of cytochrome c oxidase subunit II (MT-CO2/COX2) (PubMed: 29355485 , PubMed: 29381136). Interacts specifically with newly synthesized MT-CO2/COX and its copper center- forming metallochaperones SCO1, SCO2 and COA6 (PubMed: 29381136). Probably facilitates MT-CO2/COX2 association with the MITRAC assembly intermediate containing MT-CO1/COX1, thereby participating in merging the MT-CO1/COX1 and MT-CO2/COX2 assembly lines (PubMed: 29381136).
Cellular Location	Mitochondrion inner membrane; Single-pass membrane protein
Tissue Location	Widely expressed. Expressed at higher level in skeletal muscle, heart and liver.

Images



Immunohistochemical analysis of paraffin-embedded human tonsil. 1, Antibody was diluted at 1:200(4° overnight). 2, Tris-EDTA,pH9.0 was used for antigen retrieval. 3,Secondary antibody was diluted at 1:200(room temperature, 30min).

Please note: All products are 'FOR RESEARCH USE ONLY. NOT FOR USE IN DIAGNOSTIC OR THERAPEUTIC PROCEDURES'.