

S100 A8+A9 (11C12) Mouse Monoclonal Antibody

S100 A8+A9 (11C12) Mouse Monoclonal Antibody

Catalog # AP93361

Product Information

Application	IHC
Primary Accession	P05109/P06702
Reactivity	Human
Host	Monoclonal, Mouse
Clonality	Monoclonal

Additional Information

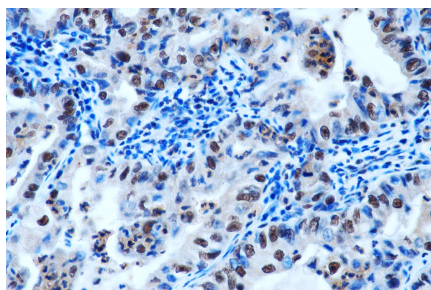
Dilution	IHC~~1:100~500
Storage Conditions	-20°C

Protein Information

Background

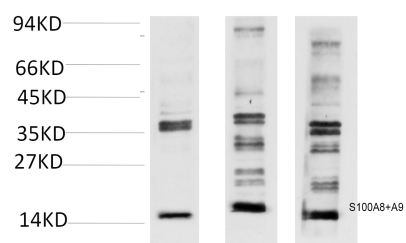
S100 proteins are localized in the cytoplasm and/or nucleus of a wide range of cells, and involved in the regulation of a number of cellular processes such as cell cycle progression and differentiation .S100 calcium binding protein A8,A9(S100A8,A9 Complex) Homo sapiens The protein encoded by this gene is a member of the S100 family of proteins containing 2 EF-hand calcium-binding motifs.

Images



Immunohistochemical analysis of paraffin-embedded Human Lung Carcinoma Tissue using S100A8+A9 Complex Mouse mAb diluted at 1:200.

Western blot analysis of A) A549 Cell, B) Mouse Spleen Tissue, 3) Rat Lung Tissue Lysate using S100A8+A9 Complex Mouse mAb diluted at 1:2,000.



Please note: All products are 'FOR RESEARCH USE ONLY. NOT FOR USE IN DIAGNOSTIC OR THERAPEUTIC PROCEDURES'.