

CE025 Rabbit Polyclonal Antibody

CE025 Rabbit Polyclonal Antibody

Catalog # AP93352

Product Information

Application	WB
Primary Accession	Q8NDZ2
Reactivity	Rat, Human, Mouse
Host	Polyclonal, Rabbit, IgG
Clonality	Polyclonal
Calculated MW	96838

Additional Information

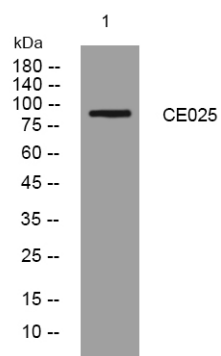
Gene ID	375484
Other Names	SUMO-interacting motif-containing protein 1, Platform element for inhibition of autolytic degradation, SIMC1, C5orf25, PLEIAD {ECO:0000303 PubMed:23707407}
Dilution	WB~~1:1000
Storage Conditions	-20°C

Protein Information

Name	SIMC1
Synonyms	C5orf25, PLEIAD {ECO:0000303 PubMed:2370}
Function	Plays a role in SMC5-SMC6 complex recruitment for viral restriction. Forms a complex with SLF2 and this complex is required to recruit SMC5-SMC6 complex to PML nuclear bodies and sites of viral replication.
Cellular Location	Nucleus, PML body.
Tissue Location	[Isoform 5]: Skeletal muscle.

Images

Western blot analysis of lysates from 3T3 cells, primary antibody was diluted at 1:1000, 4°over night



Please note: All products are 'FOR RESEARCH USE ONLY. NOT FOR USE IN DIAGNOSTIC OR THERAPEUTIC PROCEDURES'.