

# ZFP1 Rabbit Polyclonal Antibody

ZFP1 Rabbit Polyclonal Antibody

Catalog # AP93350

## Product Information

---

Application	WB
Primary Accession	<a href="#">Q6P2D0</a>
Reactivity	Human, Mouse
Host	Polyclonal, Rabbit, IgG
Clonality	Polyclonal
Calculated MW	47516

## Additional Information

---

Gene ID	162239
Other Names	Zinc finger protein 1 homolog, Zfp-1, Zinc finger protein 475, ZFP1, ZNF475
Dilution	WB~~1:1000
Storage Conditions	-20°C

## Protein Information

---

Name	ZFP1
Synonyms	ZNF475
Function	May be involved in transcriptional regulation.
Cellular Location	Nucleus {ECO:0000250 UniProtKB:P08042}. Note=Shows widespread expression throughout the nucleus, but appears to be excluded from nucleoli. {ECO:0000250 UniProtKB:P08042}

## Background

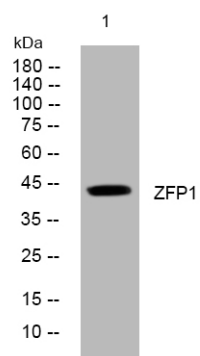
---

This gene belongs to the zinc finger protein family. Some members of this family bind to DNA by zinc-mediated secondary structures called zinc fingers, and are involved in transcriptional regulation. Alternative splicing results in multiple transcript variants encoding different isoforms. [provided by RefSeq, Jan 2016],

## Images

---

Western blot analysis of lysates from MCF-7 cells, primary



antibody was diluted at 1:1000, 4°over night

Please note: All products are 'FOR RESEARCH USE ONLY. NOT FOR USE IN DIAGNOSTIC OR THERAPEUTIC PROCEDURES'.