

S6OS1 Rabbit Polyclonal Antibody

S6OS1 Rabbit Polyclonal Antibody

Catalog # AP93347

Product Information

Application	WB
Primary Accession	Q8N1H7
Reactivity	Human, Mouse
Host	Polyclonal, Rabbit, IgG
Clonality	Polyclonal
Calculated MW	68166

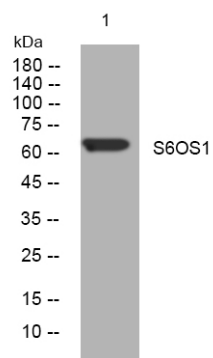
Additional Information

Gene ID	317761
Other Names	Protein SIX6OS1, Six6 opposite strand transcript 1 {ECO:0000312 HGNC:HGNC:19849}, SIX6OS1 (HGNC:19849), C14orf39
Dilution	WB~~1:1000
Storage Conditions	-20°C

Protein Information

Name	SIX6OS1 (HGNC:19849)
Synonyms	C14orf39
Function	Meiotic protein that localizes to the central element of the synaptonemal complex and is required for chromosome synapsis during meiotic recombination. Required for the appropriate processing of intermediate recombination nodules before crossover formation.
Cellular Location	Chromosome {ECO:0000250 UniProtKB:Q9CTN5}. Note=Component of the central element of the synaptonemal complex. In spermatocytes, detected from zygonema to pachynema and localizes along synapsed lateral elements. Loading to the central element of the synaptonemal complex is dependent on the assembly of the tripartite synaptonemal complex structure that occurs upon synapsis between homologous chromosomes. {ECO:0000250 UniProtKB:Q9CTN5}
Tissue Location	Highest expression in retina, skeletal muscle, testis and colon.

Images



Western blot analysis of lysates from SH-SY5Y cells,
primary antibody was diluted at 1:1000, 4° over night

Please note: All products are 'FOR RESEARCH USE ONLY. NOT FOR USE IN DIAGNOSTIC OR THERAPEUTIC PROCEDURES'.