

# AMZ2 Rabbit Polyclonal Antibody

AMZ2 Rabbit Polyclonal Antibody

Catalog # AP93338

## Product Information

---

<b>Application</b>	WB
<b>Primary Accession</b>	<a href="#">Q86W34</a>
<b>Reactivity</b>	Rat, Human, Mouse
<b>Host</b>	Polyclonal, Rabbit, IgG
<b>Clonality</b>	Polyclonal
<b>Calculated MW</b>	41263

## Additional Information

---

<b>Gene ID</b>	51321
<b>Other Names</b>	Archaemetzincin-2, 3.4.-.-, Archeobacterial metalloproteinase-like protein 2, AMZ2
<b>Dilution</b>	WB~~1:1000
<b>Storage Conditions</b>	-20°C

## Protein Information

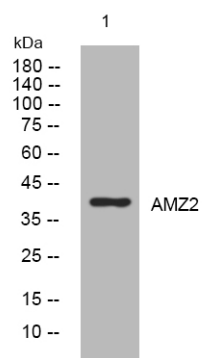
---

<b>Name</b>	AMZ2
<b>Function</b>	Probable zinc metalloprotease.
<b>Tissue Location</b>	Down-regulated in testis from patients with maturation arrest (MA) or Sertoli cell-only syndrome (SCOS)

## Images

---

Western blot analysis of lysates from CACO2 cells,  
primary antibody was diluted at 1:1000, 4° over night



Please note: All products are 'FOR RESEARCH USE ONLY. NOT FOR USE IN DIAGNOSTIC OR THERAPEUTIC PROCEDURES'.