

VCY1 Rabbit Polyclonal Antibody

VCY1 Rabbit Polyclonal Antibody

Catalog # AP93321

Product Information

Application	WB
Primary Accession	O14598
Reactivity	Rat, Human, Mouse
Host	Polyclonal, Rabbit, IgG
Clonality	Polyclonal
Calculated MW	12917

Additional Information

Gene ID	353513;9084
Other Names	Testis-specific basic protein Y 1, Basic charge, Y-linked 1, Variably charged protein Y, VCY, BPY1, VCY1A
Dilution	WB~~1:1000
Storage Conditions	-20°C

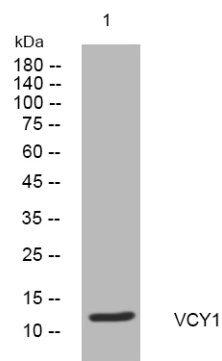
Protein Information

Name	VCY
Synonyms	BPY1, VCY1A
Function	May mediate a process in spermatogenesis or may play a role in sex ratio distortion.
Tissue Location	Expressed exclusively in testis.

Background

The protein encoded by this gene is a member of a family of human VCX/Y genes. This gene family has multiple members on both X and Y chromosomes, and all are expressed exclusively in male germ cells. Members of the VCX/Y family share a high degree of sequence identity, with the exception that a 30-bp unit is tandemly repeated in X-linked members but occurs only once in Y-linked members. VCX/Y genes encode small and highly charged proteins of unknown function. This gene encodes a small, positively charged protein. The presence of a putative bipartite nuclear localization signal suggests that this gene encodes a nuclear protein. The genome has two identical copies of this gene within a palindromic region; this record represents the more centromeric copy. [provided by RefSeq, Jul 2008],

Images



Western blot analysis of lysates from DU145 cells,
primary antibody was diluted at 1:1000, 4°over night

Please note: All products are 'FOR RESEARCH USE ONLY. NOT FOR USE IN DIAGNOSTIC OR THERAPEUTIC PROCEDURES'.