

SPR2D Rabbit Polyclonal Antibody

SPR2D Rabbit Polyclonal Antibody

Catalog # AP93316

Product Information

Application	IHC, IF
Primary Accession	P22532
Reactivity	Human, Mouse
Host	Polyclonal, Rabbit,IgG
Clonality	Polyclonal
Calculated MW	7905

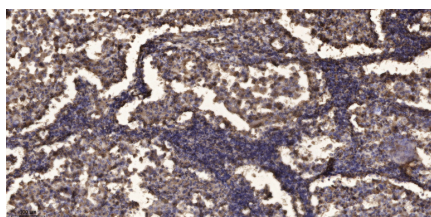
Additional Information

Gene ID	6703
Other Names	Small proline-rich protein 2D, SPR-2D, Small proline-rich protein II, SPR-II, SPRR2D
Dilution	IHC~~1:100~500 IF~~1:50~200
Storage Conditions	-20°C

Protein Information

Name	SPRR2D
Function	Cross-linked envelope protein of keratinocytes. It is a keratinocyte protein that first appears in the cell cytosol, but ultimately becomes cross-linked to membrane proteins by transglutaminase. All that results in the formation of an insoluble envelope beneath the plasma membrane.
Cellular Location	Cytoplasm.

Images



Immunohistochemical analysis of paraffin-embedded human Squamous cell carcinoma of lung. 1, Antibody was diluted at 1:200(4° overnight). 2, Tris-EDTA,pH9.0 was used for antigen retrieval. 3,Secondary antibody was diluted at 1:200(room temperature, 45min).

Please note: All products are 'FOR RESEARCH USE ONLY. NOT FOR USE IN DIAGNOSTIC OR THERAPEUTIC PROCEDURES'.