

RIM3B Rabbit Polyclonal Antibody

RIM3B Rabbit Polyclonal Antibody

Catalog # AP93312

Product Information

Application	WB
Primary Accession	A6NNM3
Reactivity	Rat, Human, Mouse
Host	Polyclonal, Rabbit, IgG
Clonality	Polyclonal
Calculated MW	180952

Additional Information

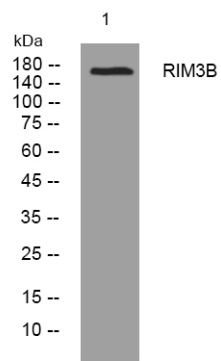
Gene ID	440804
Other Names	RIMS-binding protein 3B, RIM-BP3.B, RIMS-binding protein 3.2, RIM-BP3.2, RIMBP3B
Dilution	WB~~1:1000
Storage Conditions	-20°C

Protein Information

Name	RIMBP3B
Function	Probable component of the manchette, a microtubule-based structure which plays a key role in sperm head morphogenesis during late stages of sperm development.
Cellular Location	Cytoplasm, cytoskeleton {ECO:0000250 UniProtKB:Q3V0F0}

Images

Western blot analysis of lysates from HpeG2 cells,
primary antibody was diluted at 1:1000, 4°over night



Please note: All products are 'FOR RESEARCH USE ONLY. NOT FOR USE IN DIAGNOSTIC OR THERAPEUTIC PROCEDURES'.