

PCDG9 Rabbit Polyclonal Antibody

PCDG9 Rabbit Polyclonal Antibody

Catalog # AP93310

Product Information

Application	WB
Primary Accession	Q9Y5G4
Reactivity	Rat, Human, Mouse
Host	Polyclonal, Rabbit, IgG
Clonality	Polyclonal
Calculated MW	101687

Additional Information

Gene ID	56107
Other Names	Protocadherin gamma-A9, PCDH-gamma-A9, PCDHGA9
Dilution	WB~~1:1000
Storage Conditions	-20°C

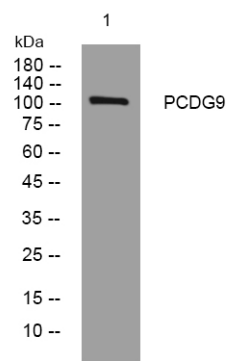
Protein Information

Name	PCDHGA9
Function	Potential calcium-dependent cell-adhesion protein. May be involved in the establishment and maintenance of specific neuronal connections in the brain.
Cellular Location	Cell membrane; Single-pass type I membrane protein

Background

This gene is a member of the protocadherin gamma gene cluster, one of three related clusters tandemly linked on chromosome five. These gene clusters have an immunoglobulin-like organization, suggesting that a novel mechanism may be involved in their regulation and expression. The gamma gene cluster includes 22 genes divided into 3 subfamilies. Subfamily A contains 12 genes, subfamily B contains 7 genes and 2 pseudogenes, and the more distantly related subfamily C contains 3 genes. The tandem array of 22 large, variable region exons are followed by a constant region, containing 3 exons shared by all genes in the cluster. Each variable region exon encodes the extracellular region, which includes 6 cadherin ectodomains and a transmembrane region. The constant region exons encode the common cytoplasmic region. These neural cadherin-like cell adhesion proteins most likely play a critical role in the establishment and function of specific cell-cell connections in the brain. Alternative splicing has been described for the gamma cluster genes. [provided by RefSeq, Jul 2008],

Images



Western blot analysis of lysates from U2OS cells, primary antibody was diluted at 1:1000, 4°over night

Please note: All products are 'FOR RESEARCH USE ONLY. NOT FOR USE IN DIAGNOSTIC OR THERAPEUTIC PROCEDURES'.