

# BAGE1 Rabbit Polyclonal Antibody

BAGE1 Rabbit Polyclonal Antibody

Catalog # AP93304

## Product Information

---

<b>Application</b>	IHC, IF
<b>Primary Accession</b>	<a href="#">Q13072</a>
<b>Reactivity</b>	Rat, Human, Mouse
<b>Host</b>	Polyclonal, Rabbit, IgG
<b>Clonality</b>	Polyclonal
<b>Calculated MW</b>	4810

## Additional Information

---

<b>Gene ID</b>	574
<b>Other Names</b>	B melanoma antigen 1, B melanoma antigen, Antigen MZ2-BA, Cancer/testis antigen 2.1, CT2.1, BAGE, BAGE1
<b>Dilution</b>	IHC~~1:100~500 IF~~1:50~200
<b>Storage Conditions</b>	-20°C

## Protein Information

---

<b>Name</b>	BAGE
<b>Synonyms</b>	BAGE1
<b>Function</b>	Unknown. Antigen recognized on a melanoma by autologous cytolytic T-lymphocytes.
<b>Cellular Location</b>	Secreted.
<b>Tissue Location</b>	Not expressed in normal tissues, except in testis. Expressed with significant proportion in melanomas, but also in tumors of various histological origins, such as bladder carcinomas, head and neck squamous cell carcinomas, lung and breast carcinomas. Not expressed in renal, colorectal and prostatic carcinomas, leukemias and lymphomas. More frequently expressed in metastatic melanomas than in primary melanomas

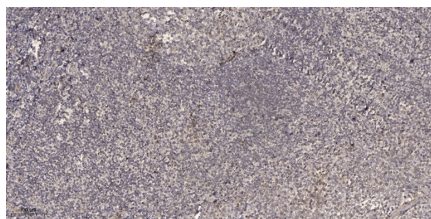
## Background

---

This gene encodes a tumor antigen recognized by autologous cytolytic lymphocytes (CTL). [provided by RefSeq, Jul 2008],

## Images

---



Immunohistochemical analysis of paraffin-embedded human tonsil. 1, Antibody was diluted at 1:200(4° overnight). 2, Tris-EDTA,pH9.0 was used for antigen retrieval. 3,Secondary antibody was diluted at 1:200(room temperature, 30min).

Please note: All products are 'FOR RESEARCH USE ONLY. NOT FOR USE IN DIAGNOSTIC OR THERAPEUTIC PROCEDURES'.