

Phospho-BCAR1 (Y410) Antibody

Rabbit mAb

Catalog # AP93207

Product Information

Application	WB
Primary Accession	P56945
Reactivity	Human
Clonality	Monoclonal
Other Names	BCAR 1; Bcar1; Breast cancer anti estrogen resistance 1 Breast cancer anti-estrogen resistance protein 1; CAS; Cas scaffolding protein family member 1; CAS1; Cass1; Crk associated substrate; Crk associated substrate p130Cas; CRK-associated substrate; CRKAS; p130cas;
Isotype	Rabbit IgG
Host	Rabbit
Calculated MW	93372

Additional Information

Dilution	WB 1:500~1:2000
Purification	Affinity-chromatography
Immunogen	A synthesized peptide derived from human Phospho-BCAR1 (Y410)
Description	Docking protein which plays a central coordinating role for tyrosine kinase-based signaling related to cell adhesion. Implicated in induction of cell migration. Overexpression confers antiestrogen resistance on breast cancer cells.
Storage Condition and Buffer	Rabbit IgG in phosphate buffered saline , pH 7.4, 150mM NaCl, 0.02% sodium azide and 50% glycerol. Store at +4°C short term. Store at -20°C long term. Avoid freeze / thaw cycle.

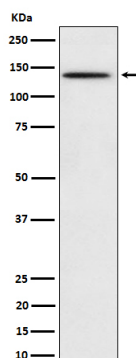
Protein Information

Name	BCAR1
Synonyms	CAS, CASS1, CRKAS
Function	Docking protein which plays a central coordinating role for tyrosine kinase-based signaling related to cell adhesion (PubMed: 12432078 , PubMed: 12832404). Implicated in induction of cell migration and cell branching (PubMed: 12432078 , PubMed: 12832404 , PubMed: 17038317). Involved in the BCAR3-mediated inhibition of TGFB signaling (By similarity).
Cellular Location	Cell junction, focal adhesion. Cytoplasm Cell projection, axon {ECO:0000250 UniProtKB:Q61140} Note=Unphosphorylated form localizes in the cytoplasm (By similarity) Localizes to focal adhesion sites following integrin engagement (By similarity). {ECO:0000250 UniProtKB:Q61140}

Tissue Location

Expressed in B-cells (at protein level) (PubMed:9020138). Widely expressed with an abundant expression in the testis (PubMed:10639512). Low level of expression seen in the liver, thymus, and peripheral blood leukocytes (PubMed:10639512)

Images



Western blot analysis of Phospho-BCAR1 (Y410) expression in HeLa treated with pervanadate cell lysate.

Please note: All products are 'FOR RESEARCH USE ONLY. NOT FOR USE IN DIAGNOSTIC OR THERAPEUTIC PROCEDURES'.