

delta 2 Catenin Antibody

Rabbit mAb

Catalog # AP93193

Product Information

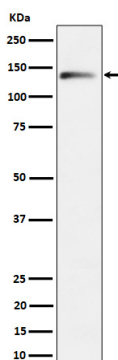
| | |
|--------------------------|------------------------------------------------------------------------------------------------------------------------------------------------------------------------------------|
| Application | WB, IF, ICC |
| Primary Accession | O35927(mouse)(human:Q9UQB3) |
| Reactivity | Rat, Mouse |
| Clonality | Monoclonal |
| Other Names | ARM-repeat protein; Catenin delta 2; CTNND 2; Ctnnd2; Delta catenin; Delta-catenin; GT24; Neural plakophilin related arm repeat protein; Neurojungin; NPRAP; T cell delta catenin; |
| Isotype | Rabbit IgG |
| Host | Rabbit |
| Calculated MW | 135 KDa |

Additional Information

| | |
|-------------------------------------|---------------------------------------------------------------------------------------------------------------------------------------------------------------------------------------------------|
| Dilution | WB 1:500~1:2000 ICC/IF 1:50~1:200 |
| Purification | Affinity-chromatography |
| Immunogen | A synthesized peptide derived from human delta 2 Catenin |
| Description | Functions as a transcriptional activator when bound to ZBTB33 (By similarity). May be involved in neuronal cell adhesion and tissue morphogenesis and integrity by regulating adhesion molecules. |
| Storage Condition and Buffer | Rabbit IgG in phosphate buffered saline , pH 7.4, 150mM NaCl, 0.02% sodium azide and 50% glycerol. Store at +4°C short term. Store at -20°C long term. Avoid freeze / thaw cycle. |

Protein Information

Images



Western blot analysis of delta 2 Catenin expression in Mouse brain cell lysate.

Please note: All products are 'FOR RESEARCH USE ONLY. NOT FOR USE IN DIAGNOSTIC OR THERAPEUTIC PROCEDURES'.