

Hsp70 Antibody

Rabbit mAb

Catalog # AP93191

Product Information

Application	WB, IHC, IF, FC, ICC, IP, IHF
Primary Accession	P0DMV8/P0DMV9
Reactivity	Human
Clonality	Monoclonal
Other Names	Heat shock 70 kDa protein 1; Heat shock 70 kDa protein 1/2; Heat shock 70 kDa protein 1A; Heat shock 70 kDa protein 1A/1B; Heat shock 70kDa protein 1B; Heat shock induced protein; HEL S 103; HSP70 1; HSP70 1A; HSP70 1B; HSP70 2; HSP70-1; HSP70-1/HSP70-2; HSP70-1A; HSP70-2; HSP70.1; HSP70.1/HSP70.2; HSP72; HSPA1; HSPA1A; HSPA1B;
Isotype	Rabbit IgG
Host	Rabbit
Calculated MW	70 KDa

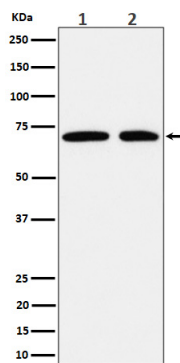
Additional Information

Dilution	WB 1:500~1:2000 IHC 1:50~1:200 ICC/IF 1:50~1:200 IP 1:50 FC 1:50
Purification	Affinity-chromatography
Immunogen	A synthesized peptide derived from human Hsp70
Description	In conjunction with other heat shock proteins, this protein stabilizes existing proteins against aggregation and mediates the folding of newly translated proteins in the cytosol and in organelles. It is also involved in the ubiquitin-proteasome pathway through interaction with the AU-rich element RNA-binding protein 1. The gene is located in the major histocompatibility complex class III region, in a cluster with two closely related genes which encode similar proteins.
Storage Condition and Buffer	Rabbit IgG in phosphate buffered saline , pH 7.4, 150mM NaCl, 0.02% sodium azide and 50% glycerol. Store at +4°C short term. Store at -20°C long term. Avoid freeze / thaw cycle.

Protein Information

Images

Western blot analysis of Hsp70 expression in (1) HeLa cell lysate; (2) MCF7 cell lysate.



Please note: All products are 'FOR RESEARCH USE ONLY. NOT FOR USE IN DIAGNOSTIC OR THERAPEUTIC PROCEDURES'.