

Apc6 / CDC16 Antibody

Rabbit mAb

Catalog # AP93190

Product Information

Application	WB, IP
Primary Accession	Q13042/Q8R349
Reactivity	Rat, Human, Mouse
Clonality	Monoclonal
Other Names	CDC16; ANAPC6; APC6; CDC16 homolog; Cyclosome subunit 6; CDC16Hs; CUT9;
Isotype	Rabbit IgG
Host	Rabbit
Calculated MW	71 KDa

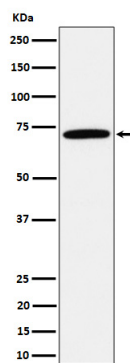
Additional Information

Dilution	WB 1:500~1:2000 IP 1:50
Purification	Affinity-chromatography
Immunogen	A synthesized peptide derived from human Apc6 / CDC16
Description	Component of the anaphase promoting complex/cyclosome (APC/C), a cell cycle-regulated E3 ubiquitin ligase that controls progression through mitosis and the G1 phase of the cell cycle. The APC/C complex acts by mediating ubiquitination and subsequent degradation of target proteins: it mainly mediates the formation of 'Lys-11'-linked polyubiquitin chains and, to a lower extent, the formation of 'Lys-48'- and 'Lys-63'-linked polyubiquitin chains.
Storage Condition and Buffer	Rabbit IgG in phosphate buffered saline , pH 7.4, 150mM NaCl, 0.02% sodium azide and 50% glycerol. Store at +4°C short term. Store at -20°C long term. Avoid freeze / thaw cycle.

Protein Information

Images

Western blot analysis of Apc6 / CDC16 expression in HepG2 cell lysate.



Please note: All products are 'FOR RESEARCH USE ONLY. NOT FOR USE IN DIAGNOSTIC OR THERAPEUTIC PROCEDURES'.