

alpha Tubulin (acetyl K40) Antibody

Rabbit mAb

Catalog # AP93183

Product Information

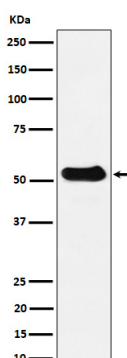
Application	WB, IHC, IF, FC, ICC, IP, IHF
Primary Accession	P68363/P68366
Reactivity	Rat, Human, Mouse
Clonality	Monoclonal
Other Names	Alpha-tubulin 1; TUBA1; TUBA1A ; Tubulin alpha 1 chain; Tubulin alpha
Isotype	Rabbit IgG
Host	Rabbit
Calculated MW	52 KDa

Additional Information

Dilution	WB 1:500~1:2000 IHC 1:50~1:200 ICC/IF 1:50~1:200 IP 1:50 FC 1:50
Purification	Affinity-chromatography
Immunogen	A synthesized peptide derived from human alpha Tubulin (acetyl K40)
Description	Tubulin is the major constituent of microtubules. It binds two moles of GTP, one at an exchangeable site on the beta chain and one at a non-exchangeable site on the alpha chain.
Storage Condition and Buffer	Rabbit IgG in phosphate buffered saline , pH 7.4, 150mM NaCl, 0.02% sodium azide and 50% glycerol. Store at +4°C short term. Store at -20°C long term. Avoid freeze / thaw cycle.

Protein Information

Images



Western blot analysis of alpha Tubulin (acetyl K40) expression in Mouse spleen cell lysate.

Please note: All products are 'FOR RESEARCH USE ONLY. NOT FOR USE IN DIAGNOSTIC OR THERAPEUTIC PROCEDURES'.