

# Choline Acetyltransferase Antibody

Rabbit mAb

Catalog # AP93179

## Product Information

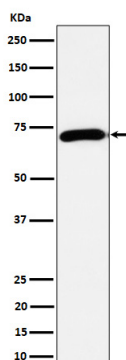
<b>Application</b>	WB, IHC
<b>Primary Accession</b>	<a href="#">Q03059(mouse)P32738(Rat)(guinea pig:P13222)(human:P28329)</a>
<b>Reactivity</b>	Rat, Mouse
<b>Clonality</b>	Monoclonal
<b>Other Names</b>	Acetyl CoA choline O; ChAT; CHOACTase; Choline acetylase; choline acetyltransferase; Choline O acetyltransferase; Choline O-acetyltransferase; CMS1A; CMS1A2;
<b>Isotype</b>	Rabbit IgG
<b>Host</b>	Rabbit
<b>Calculated MW</b>	72 KDa

## Additional Information

<b>Dilution</b>	WB 1:500~1:2000 IHC 1:50~1:200
<b>Purification</b>	Affinity-chromatography
<b>Immunogen</b>	A synthesized peptide derived from human Choline Acetyltransferase
<b>Description</b>	Catalyzes the reversible synthesis of acetylcholine (ACh) from acetyl CoA and choline at cholinergic synapses.
<b>Storage Condition and Buffer</b>	Rabbit IgG in phosphate buffered saline , pH 7.4, 150mM NaCl, 0.02% sodium azide and 50% glycerol. Store at +4°C short term. Store at -20°C long term. Avoid freeze / thaw cycle.

## Protein Information

## Images



Western blot analysis of Choline Acetyltransferase expression in Mouse brain cell lysate.

Please note: All products are 'FOR RESEARCH USE ONLY. NOT FOR USE IN DIAGNOSTIC OR THERAPEUTIC PROCEDURES'.