

# Iba1 Antibody

Rabbit mAb

Catalog # AP93178

## Product Information

---

<b>Application</b>	WB, IHC, IF, ICC, IHF
<b>Primary Accession</b>	<a href="#">P55008/O70200</a>
<b>Reactivity</b>	Rat, Human, Mouse
<b>Clonality</b>	Monoclonal
<b>Other Names</b>	IBA1; IRT1; AIF-1; IRT-1;
<b>Isotype</b>	Rabbit IgG
<b>Host</b>	Rabbit
<b>Calculated MW</b>	17 KDa

## Additional Information

---

<b>Dilution</b>	WB 1:500~1:2000 IHC 1:50~1:200 ICC/IF 1:50~1:200
<b>Purification</b>	Affinity-chromatography
<b>Immunogen</b>	A synthesized peptide derived from human Iba1
<b>Description</b>	Actin-binding protein that enhances membrane ruffling and RAC activation. Enhances the actin-bundling activity of LCP1. Binds calcium. Plays a role in RAC signaling and in phagocytosis. May play a role in macrophage activation and function. Promotes the proliferation of vascular smooth muscle cells and of T-lymphocytes. Enhances lymphocyte migration. Plays a role in vascular inflammation.
<b>Storage Condition and Buffer</b>	Rabbit IgG in phosphate buffered saline , pH 7.4, 150mM NaCl, 0.02% sodium azide and 50% glycerol. Store at +4°C short term. Store at -20°C long term. Avoid freeze / thaw cycle.

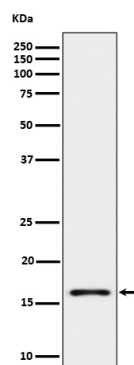
## Protein Information

---

## Images

---

Western blot analysis of Iba1 expression in Mouse testis cell lysate.



Please note: All products are 'FOR RESEARCH USE ONLY. NOT FOR USE IN DIAGNOSTIC OR THERAPEUTIC PROCEDURES'.