

Desmocollin 1 Antibody

Rabbit mAb

Catalog # AP93160

Product Information

Application	WB
Primary Accession	Q08554
Reactivity	Rat, Human, Mouse
Clonality	Monoclonal
Other Names	CDHF1; DG2/DG3; DSC1;
Isotype	Rabbit IgG
Host	Rabbit
Calculated MW	99987

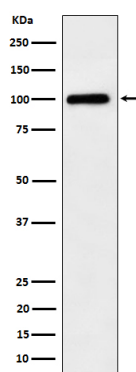
Additional Information

Dilution	WB 1:500~1:2000
Purification	Affinity-chromatography
Immunogen	A synthesized peptide derived from human Desmocollin 1
Description	Desmocollin 1 is a component of intercellular desmosome junctions. It is involved in the interaction of plaque proteins and intermediate filaments mediating cell-cell adhesion.
Storage Condition and Buffer	Rabbit IgG in phosphate buffered saline , pH 7.4, 150mM NaCl, 0.02% sodium azide and 50% glycerol. Store at +4°C short term. Store at -20°C long term. Avoid freeze / thaw cycle.

Protein Information

Name	DSC1
Synonyms	CDHF1
Function	A component of desmosome cell-cell junctions which are required for positive regulation of cellular adhesion (By similarity). Required for desmosome adhesion strength between the granular layers of the epidermis, as a result moderates epidermal proliferation and differentiation (By similarity). Is therefore required to maintain postnatal epidermal barrier function and normal hair follicle morphology into adulthood (By similarity).
Cellular Location	Cell membrane; Single-pass type I membrane protein. Cell junction, desmosome {ECO:0000250 UniProtKB:P55849}
Tissue Location	Strongly expressed in epidermis, less in lymph node and tongue.

Images



Western blot analysis of Desmocollin 1 expression in A375 cell lysate.

Please note: All products are 'FOR RESEARCH USE ONLY. NOT FOR USE IN DIAGNOSTIC OR THERAPEUTIC PROCEDURES'.