

# Phospho-LRP6 (S1490) Antibody

Rabbit mAb

Catalog # AP93146

## Product Information

---

<b>Application</b>	WB
<b>Primary Accession</b>	<a href="#">O75581</a>
<b>Reactivity</b>	Human
<b>Clonality</b>	Monoclonal
<b>Other Names</b>	Low-density lipoprotein receptor-related protein 7;
<b>Isotype</b>	Rabbit IgG
<b>Host</b>	Rabbit
<b>Calculated MW</b>	180429

## Additional Information

---

<b>Dilution</b>	WB 1:500~1:2000
<b>Purification</b>	Affinity-chromatography
<b>Immunogen</b>	A synthesized peptide derived from human Phospho-LRP6 (S1490)
<b>Description</b>	Acts as a coreceptor with members of the frizzled family of seven-transmembrane spanning receptors to transduce signal by Wnt proteins (PubMed:11336703, PubMed:11448771, PubMed:15778503, PubMed:11719191, PubMed:15908424, PubMed:16252235).
<b>Storage Condition and Buffer</b>	Rabbit IgG in phosphate buffered saline , pH 7.4, 150mM NaCl, 0.02% sodium azide and 50% glycerol. Store at +4°C short term. Store at -20°C long term. Avoid freeze / thaw cycle.

## Protein Information

---

<b>Name</b>	LRP6
<b>Function</b>	Component of the Wnt-Fzd-LRP5-LRP6 complex that triggers beta-catenin signaling through inducing aggregation of receptor-ligand complexes into ribosome-sized signalosomes (PubMed: <a href="#">11357136</a> , PubMed: <a href="#">11448771</a> , PubMed: <a href="#">15778503</a> , PubMed: <a href="#">16341017</a> , PubMed: <a href="#">16513652</a> , PubMed: <a href="#">17326769</a> , PubMed: <a href="#">17400545</a> , PubMed: <a href="#">19107203</a> , PubMed: <a href="#">19293931</a> , PubMed: <a href="#">19801552</a> , PubMed: <a href="#">28341812</a> , PubMed: <a href="#">34896607</a> ). Cell-surface coreceptor of Wnt/beta-catenin signaling, which plays a pivotal role in various processes including retinal angiogenesis and bone formation (PubMed: <a href="#">11357136</a> , PubMed: <a href="#">11448771</a> , PubMed: <a href="#">15778503</a> , PubMed: <a href="#">16341017</a> , PubMed: <a href="#">16513652</a> , PubMed: <a href="#">17326769</a> , PubMed: <a href="#">17400545</a> , PubMed: <a href="#">19107203</a> , PubMed: <a href="#">19293931</a> , PubMed: <a href="#">19801552</a> , PubMed: <a href="#">28341812</a> , PubMed: <a href="#">34896607</a> ). The Wnt-induced Fzd/LRP6 coreceptor complex recruits DVL1 polymers to the plasma membrane which, in turn, recruits the AXIN1/GSK3B-complex to the cell surface promoting the formation of

signalosomes and inhibiting AXIN1/GSK3-mediated phosphorylation and destruction of beta-catenin (PubMed:[16513652](#)). Required for posterior patterning of the epiblast during gastrulation (By similarity).

### Cellular Location

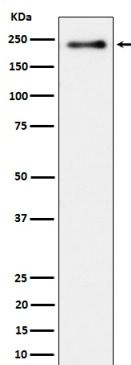
Cell membrane; Single-pass type I membrane protein. Endoplasmic reticulum. Membrane raft. Note=On Wnt signaling, undergoes a cycle of caveolin- or clathrin-mediated endocytosis and plasma membrane location. Released from the endoplasmic reticulum on palmitoylation Mono-ubiquitination retains it in the endoplasmic reticulum in the absence of palmitoylation. On Wnt signaling, phosphorylated, aggregates and colocalizes with AXIN1 and GSK3B at the plasma membrane in LRP6- signalosomes (By similarity). Chaperoned to the plasma membrane by HSP90B1 and MESD (PubMed:23572575). {ECO:0000250 | UniProtKB:O88572, ECO:0000269 | PubMed:23572575}

### Tissue Location

Widely coexpressed with LRP5 during embryogenesis and in adult tissues

## Images

---



Western blot analysis of Phospho-LRP6 (S1490) expression in heLa treated with Calyculin cell lysate.

Please note: All products are 'FOR RESEARCH USE ONLY. NOT FOR USE IN DIAGNOSTIC OR THERAPEUTIC PROCEDURES'.