

# Lunatic Fringe Antibody

Rabbit mAb

Catalog # AP93143

## Product Information

Application	WB
Primary Accession	<a href="#">Q8NES3</a>
Reactivity	Rat, Human, Mouse
Clonality	Monoclonal
Other Names	SCDO3;
Isotype	Rabbit IgG
Host	Rabbit
Calculated MW	41773

## Additional Information

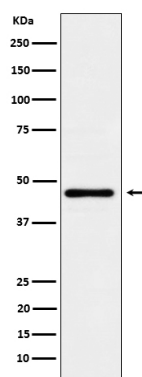
Dilution	WB 1:500~1:2000
Purification	Affinity-chromatography
Immunogen	A synthesized peptide derived from human Lunatic Fringe
Description	Glycosyltransferase that initiates the elongation of O-linked fucose residues attached to EGF-like repeats in the extracellular domain of Notch molecules.
Storage Condition and Buffer	Rabbit IgG in phosphate buffered saline , pH 7.4, 150mM NaCl, 0.02% sodium azide and 50% glycerol. Store at +4°C short term. Store at -20°C long term. Avoid freeze / thaw cycle.

## Protein Information

Name	LFNG ( <a href="#">HGNC:6560</a> )
Function	Glycosyltransferase that initiates the elongation of O-linked fucose residues attached to EGF-like repeats in the extracellular domain of Notch molecules. Modulates NOTCH1 activity by modifying O- fucose residues at specific EGF-like domains resulting in inhibition of NOTCH1 activation by JAG1 and enhancement of NOTCH1 activation by DLL1 via an increase in its binding to DLL1 (By similarity). Decreases the binding of JAG1 to NOTCH2 but not that of DLL1 (PubMed: <a href="#">11346656</a> ). Essential mediator of somite segmentation and patterning (By similarity).
Cellular Location	Golgi apparatus {ECO:0000250 UniProtKB:O09010}. Golgi apparatus membrane; Single-pass type II membrane protein

## Images

Western blot analysis of Lunatic Fringe expression in



HeLa cell lysate.

Please note: All products are 'FOR RESEARCH USE ONLY. NOT FOR USE IN DIAGNOSTIC OR THERAPEUTIC PROCEDURES'.