

Phospho-RIP3 (S232) Antibody

Rabbit mAb

Catalog # AP93140

Product Information

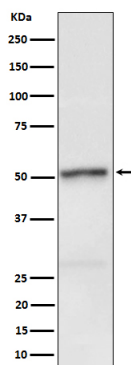
Application	WB
Primary Accession	Q9QZL0(mouse)(human:Q9Y572)
Reactivity	Mouse
Clonality	Monoclonal
Other Names	Receptor interacting protein 3; Receptor interacting serine threonine kinase 3; Receptor interacting serine/threonine protein kinase 3; Receptor-interacting serine/threonine-protein kinase 3; RIP like protein kinase 3; RIP-3;RIP-like protein kinase 3; RIPK3;
Isotype	Rabbit IgG
Host	Rabbit
Calculated MW	50 KDa

Additional Information

Dilution	WB 1:500~1:2000
Purification	Affinity-chromatography
Immunogen	A synthesized peptide derived from human Phospho-RIP3 (S232)
Description	Promotes apoptosis.
Storage Condition and Buffer	Rabbit IgG in phosphate buffered saline , pH 7.4, 150mM NaCl, 0.02% sodium azide and 50% glycerol. Store at +4°C short term. Store at -20°C long term. Avoid freeze / thaw cycle.

Protein Information

Images



Western blot analysis of Phospho-RIP3 (S232) expression in L929 cell lysate.

Please note: All products are 'FOR RESEARCH USE ONLY. NOT FOR USE IN DIAGNOSTIC OR THERAPEUTIC PROCEDURES'.