

AKT1 + AKT2 + AKT3 Antibody

Rabbit mAb

Catalog # AP93128

Product Information

Application	WB, IHC, IF, FC, ICC, IP, IHF
Primary Accession	P31749/P31751/Q9Y243
Reactivity	Rat, Human, Mouse
Clonality	Monoclonal
Other Names	PKB;RAC;PRKBA;PKB-ALPHA;RAC-ALPHA; AKT1 ; AKT2; AKT3; Akt1/2/3; pan Akt;
Isotype	Rabbit IgG
Host	Rabbit
Calculated MW	56 KDa

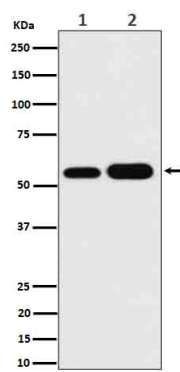
Additional Information

Dilution	WB 1:500~1:2000 IHC 1:50~1:100 ICC/IF 1:50~1:100 IP 1:50 FC 1:50
Purification	Affinity-chromatography
Immunogen	A synthesized peptide derived from human AKT1 + AKT2 + AKT3
Description	Akt, also referred to as PKB or Rac, plays a critical role in controlling survival and apoptosis. This protein kinase is activated by insulin and various growth and survival factors to function in a wortmannin-sensitive pathway involving PI3 kinase. Akt is activated by phospholipid binding and activation loop phosphorylation at Thr308 by PDK1 and by phosphorylation within the carboxy terminus at Ser473.
Storage Condition and Buffer	Rabbit IgG in phosphate buffered saline , pH 7.4, 150mM NaCl, 0.02% sodium azide and 50% glycerol. Store at +4°C short term. Store at -20°C long term. Avoid freeze / thaw cycle.

Protein Information

Images

Western blot analysis of AKT1 + AKT2 + AKT3 expression
in (1) Hela cell lysate;(2) A549 cell lysate.



Please note: All products are 'FOR RESEARCH USE ONLY. NOT FOR USE IN DIAGNOSTIC OR THERAPEUTIC PROCEDURES'.