

BCL2L15 Antibody

Rabbit mAb

Catalog # AP93105

Product Information

Application	WB, IHC, IF, FC, ICC, IHF
Primary Accession	Q5TBC7
Reactivity	Human
Clonality	Monoclonal
Other Names	Bcl-2-like protein 15; Bcl2-L-15; BCL2-like 15; Bcl2l15; Bfk; Gm566; Pro apoptotic Bcl 2 protein;
Isotype	Rabbit IgG
Host	Rabbit
Calculated MW	17725

Additional Information

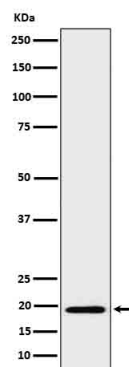
Dilution	WB 1:500~1:2000 IHC 1:50~1:200 ICC/IF 1:50~1:200 FC 1:50
Purification	Affinity-chromatography
Immunogen	A synthesized peptide derived from human BCL2L15
Description	Predicted to be involved in apoptotic process and regulation of apoptotic process. Predicted to be active in cytosol and nucleus. [provided by Alliance of Genome Resources, Apr 2022]
Storage Condition and Buffer	Rabbit IgG in phosphate buffered saline , pH 7.4, 150mM NaCl, 0.02% sodium azide and 50% glycerol. Store at +4°C short term. Store at -20°C long term. Avoid freeze / thaw cycle.

Protein Information

Name	BCL2L15
Synonyms	C1orf178

Images

Western blot analysis of BCL2L15 in His-tagged BCL2L15 cell lysate.



Please note: All products are 'FOR RESEARCH USE ONLY. NOT FOR USE IN DIAGNOSTIC OR THERAPEUTIC PROCEDURES'.