

CSDE1 Antibody

Rabbit mAb

Catalog # AP93086

Product Information

Application	WB, IHC, IF, ICC, IP, IHF
Primary Accession	O75534
Reactivity	Rat, Human, Mouse
Clonality	Monoclonal
Other Names	Csde1; NRU; UNR;
Isotype	Rabbit IgG
Host	Rabbit
Calculated MW	88885

Additional Information

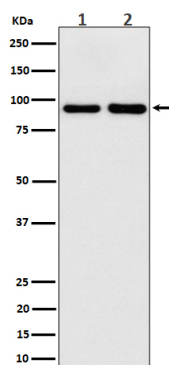
Dilution	WB 1:500~1:2000 IHC 1:50~1:200 ICC/IF 1:50~1:200 IP 1:50
Purification	Affinity-chromatography
Immunogen	A synthesized peptide derived from human CSDE1
Description	RNA-binding protein. Required for internal initiation of translation of human rhinovirus RNA. May be involved in translationally coupled mRNA turnover.
Storage Condition and Buffer	Rabbit IgG in phosphate buffered saline , pH 7.4, 150mM NaCl, 0.02% sodium azide and 50% glycerol. Store at +4°C short term. Store at -20°C long term. Avoid freeze / thaw cycle.

Protein Information

Name	CSDE1 (HGNC:29905)
Function	RNA-binding protein involved in translationally coupled mRNA turnover (PubMed: 11051545 , PubMed: 15314026). Implicated with other RNA- binding proteins in the cytoplasmic deadenylation/translational and decay interplay of the FOS mRNA mediated by the major coding-region determinant of instability (mCRD) domain (PubMed: 11051545 , PubMed: 15314026). Required for efficient formation of stress granules (PubMed: 29395067).
Cellular Location	Cytoplasm. Cytoplasm, Stress granule. Cytoplasm, P-body

Images

Western blot analysis of CSDE1 expression in (1) 293 cell lysate; (2) Mouse brain lysate.



Please note: All products are 'FOR RESEARCH USE ONLY. NOT FOR USE IN DIAGNOSTIC OR THERAPEUTIC PROCEDURES'.