

CD147 Antibody

Rabbit mAb

Catalog # AP93084

Product Information

Application	WB, IHC, IF, ICC, IP, IHF
Primary Accession	P18572(mouse)(human:P35613)
Reactivity	Mouse
Clonality	Monoclonal
Other Names	5A11 antigen; Basigin; Blood brain barrier HT7 antigen; Bsg; CD147; Collagenase stimulatory factor; EMMPRIN; Extracellular matrix metalloproteinase inducer; Leukocyte activation antigen M6; Neurothelin; OK blood group; OK blood group antigen; TCSF; Tumor cell derived collagenase stimulatory factor;
Isotype	Rabbit IgG
Host	Rabbit
Calculated MW	45 KDa

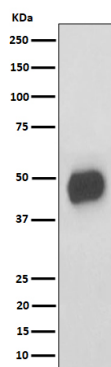
Additional Information

Dilution	WB 1:500~1:2000 IHC 1:50~1:200 ICC/IF 1:50~1:200 IP 1:50
Purification	Affinity-chromatography
Immunogen	A synthesized peptide derived from human CD147
Description	Plays pivotal roles in spermatogenesis, embryo implantation, neural network formation and tumor progression. Stimulates adjacent fibroblasts to produce matrix metalloproteinases (MMPs).
Storage Condition and Buffer	Rabbit IgG in phosphate buffered saline , pH 7.4, 150mM NaCl, 0.02% sodium azide and 50% glycerol. Store at +4°C short term. Store at -20°C long term. Avoid freeze / thaw cycle.

Protein Information

Images

Western blot analysis of CD147 expression in RAW 264.7 cell lysate.



Please note: All products are 'FOR RESEARCH USE ONLY. NOT FOR USE IN DIAGNOSTIC OR THERAPEUTIC PROCEDURES'.