

Meckelin Antibody

Rabbit mAb

Catalog # AP93081

Product Information

Application	WB, IHC, IF, FC, ICC, IHF
Primary Accession	Q5HYA8
Reactivity	Rat, Human, Mouse
Clonality	Monoclonal
Other Names	JBTS6; MKS3; NPHP11; TMEM67; TNEM67;
Isotype	Rabbit IgG
Host	Rabbit
Calculated MW	111745

Additional Information

Dilution	WB 1:500~1:2000 IHC 1:50~1:200 ICC/IF 1:50~1:200 FC 1:50
Purification	Affinity-chromatography
Immunogen	A synthesized peptide derived from human Meckelin
Description	Meckelin localizes to the primary cilium and to the plasma membrane. It functions in centriole migration to the apical membrane and formation of the primary cilium. Defects in the gene are a cause of Meckel syndrome type 3 (MKS3) and Joubert syndrome type 6 (JBTS6).
Storage Condition and Buffer	Rabbit IgG in phosphate buffered saline , pH 7.4, 150mM NaCl, 0.02% sodium azide and 50% glycerol. Store at +4°C short term. Store at -20°C long term. Avoid freeze / thaw cycle.

Protein Information

Name	TMEM67
Synonyms	MKS3
Function	Required for ciliary structure and function. Part of the tectonic-like complex which is required for tissue-specific ciliogenesis and may regulate ciliary membrane composition (By similarity). Involved in centrosome migration to the apical cell surface during early ciliogenesis. Involved in the regulation of cilia length and appropriate number through the control of centrosome duplication. Is a key regulator of stereociliary bundle orientation (By similarity). Required for epithelial cell branching morphology. Essential for endoplasmic reticulum-associated degradation (ERAD) of surfactant protein C (SFTPC). Involved in the negative regulation of canonical Wnt signaling, and activation of the non-canonical cascade stimulated by WNT5A (PubMed: 26035863). In non-canonical Wnt signaling, it may act as ROR2 coreceptor (By similarity).

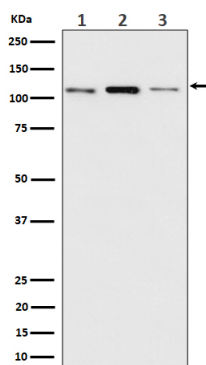
Cellular Location

Cell membrane; Multi-pass membrane protein. Endoplasmic reticulum membrane; Multi-pass membrane protein. Cell projection, cilium Cytoplasm, cytoskeleton, cilium basal body. Note=Localizes at the transition zone, a region between the basal body and the ciliary axoneme (PubMed:22121117).

Tissue Location

Widely expressed in adult and fetal tissues. Expressed at higher level in spinal cord.

Images



Western blot analysis of Meckelin expression in (1) MCF7 cell lysate; (2) RAW 264.7 cell lysate; (3) C6 cell lysate.

Please note: All products are 'FOR RESEARCH USE ONLY. NOT FOR USE IN DIAGNOSTIC OR THERAPEUTIC PROCEDURES'.