

CSDE1 Antibody

Rabbit mAb

Catalog # AP93080

Product Information

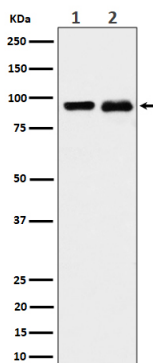
Application	WB, IP
Primary Accession	O75534
Reactivity	Rat, Human, Mouse
Clonality	Monoclonal
Other Names	Csde1; NRU; UNR;
Isotype	Rabbit IgG
Host	Rabbit
Calculated MW	89 KDa

Additional Information

Dilution	WB 1:500~1:2000 IP 1:50
Purification	Affinity-chromatography
Immunogen	A synthesized peptide derived from human CSDE1
Description	RNA-binding protein. Required for internal initiation of translation of human rhinovirus RNA. May be involved in translationally coupled mRNA turnover.
Storage Condition and Buffer	Rabbit IgG in phosphate buffered saline , pH 7.4, 150mM NaCl, 0.02% sodium azide and 50% glycerol. Store at +4°C short term. Store at -20°C long term. Avoid freeze / thaw cycle.

Protein Information

Images



Western blot analysis of CSDE1 expression in (1) K562 cell lysate; (2) PC-12 cell lysate.