

# Clusterin Antibody

Rabbit mAb

Catalog # AP93072

## Product Information

---

<b>Application</b>	WB, IHC, IP
<b>Primary Accession</b>	<a href="#">Q06890(mouse)(human:P10909)</a>
<b>Reactivity</b>	Rat, Mouse
<b>Clonality</b>	Monoclonal
<b>Other Names</b>	AAG4; Aging-associated gene 4 protein; APOJ; ApoJalpha; Apojbeta; Apolipoprotein J; CLI; CLU; Clusterin alpha chain; Clusterin; Complement cytolysis inhibitor a chain; Complement cytolysis inhibitor; Complement cytolysis inhibitor b chain; complement lysis inhibitor; Ku70-binding protein 1; KUB1; NA1/NA2; SGP2; sulfated glycoprotein 2; Testosterone-repressed prostate message 2; TRPM2;
<b>Isotype</b>	Rabbit IgG
<b>Host</b>	Rabbit
<b>Calculated MW</b>	40 KDa

## Additional Information

---

<b>Dilution</b>	WB 1:500~1:2000 IHC 1:50~1:200 IP 1:50
<b>Purification</b>	Affinity-chromatography
<b>Immunogen</b>	A synthesized peptide derived from human Clusterin
<b>Description</b>	Isoform 1:Functions as extracellular chaperone that prevents aggregation of non native proteins (PubMed:11123922, PubMed:19535339).Prevents stress-induced aggregation of blood plasma proteins (PubMed:11123922, PubMed:12176985, PubMed:17260971, PubMed:19996109).Inhibits formation of amyloid fibrils by APP, APOC2, B2M, CALCA, CSN3, SNCA and aggregation-prone LYZ variants (in vitro) (PubMed:12047389, PubMed:17412999, PubMed:17407782).
<b>Storage Condition and Buffer</b>	Rabbit IgG in phosphate buffered saline , pH 7.4, 150mM NaCl, 0.02% sodium azide and 50% glycerol. Store at +4°C short term. Store at -20°C long term. Avoid freeze / thaw cycle.

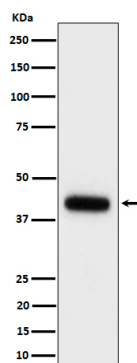
## Protein Information

---

## Images

---

Western blot analysis of Clusterin expression in mouse serum cell lysate.



Please note: All products are 'FOR RESEARCH USE ONLY. NOT FOR USE IN DIAGNOSTIC OR THERAPEUTIC PROCEDURES'.