

CRCP Antibody

Rabbit mAb

Catalog # AP93061

Product Information

Application	WB, IHC, IF, ICC, IP, IHF
Primary Accession	O75575
Reactivity	Rat, Human, Mouse
Clonality	Monoclonal
Other Names	CGRPRCP; CRCP; HsC17; RCP; RCP9;
Isotype	Rabbit IgG
Host	Rabbit
Calculated MW	16871

Additional Information

Dilution	WB 1:500~1:2000 IHC 1:50~1:200 ICC/IF 1:50~1:200 IP 1:50
Purification	Affinity-chromatography
Immunogen	A synthesized peptide derived from human CRCP
Description	DNA-dependent RNA polymerase catalyzes the transcription of DNA into RNA using the four ribonucleoside triphosphates as substrates. Specific peripheric component of RNA polymerase III which synthesizes small RNAs, such as 5S rRNA and tRNAs.
Storage Condition and Buffer	Rabbit IgG in phosphate buffered saline , pH 7.4, 150mM NaCl, 0.02% sodium azide and 50% glycerol. Store at +4°C short term. Store at -20°C long term. Avoid freeze / thaw cycle.

Protein Information

Name	CRCP (HGNC:17888)
Function	DNA-dependent RNA polymerase catalyzes the transcription of DNA into RNA using the four ribonucleoside triphosphates as substrates (PubMed: 20413673 , PubMed: 33558764 , PubMed: 34675218). Specific peripheric component of RNA polymerase III (Pol III) which synthesizes small non-coding RNAs including 5S rRNA, snRNAs, tRNAs and miRNAs from at least 500 distinct genomic loci. With POLR3H/RPC8 forms a mobile stalk that protrudes from Pol III core and functions primarily in transcription initiation (By similarity) (PubMed: 20413673 , PubMed: 33558764 , PubMed: 33558766 , PubMed: 34675218). Pol III plays a key role in sensing and limiting infection by intracellular bacteria and DNA viruses. Acts as nuclear and cytosolic DNA sensor involved in innate immune response. Can sense non-self dsDNA that serves as template for transcription into dsRNA. The non-self RNA polymerase III transcripts, such as Epstein-Barr virus-encoded RNAs (EBERs) induce type I interferon and NF-kappa-B through the RIG-I pathway (PubMed: 19609254 , PubMed: 19631370).

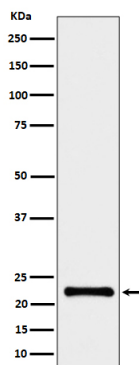
Cellular Location

Nucleus. Cell membrane {ECO:0000250|UniProtKB:O35427}; Peripheral membrane protein {ECO:0000250|UniProtKB:O35427}; Cytoplasmic side {ECO:0000250|UniProtKB:O35427}

Tissue Location

Ubiquitous. Most prevalent in testis.

Images



Western blot analysis of CRCP expression in HeLa cell lysate.

Please note: All products are 'FOR RESEARCH USE ONLY. NOT FOR USE IN DIAGNOSTIC OR THERAPEUTIC PROCEDURES'.