

FAM50A Antibody

Rabbit mAb

Catalog # AP93040

Product Information

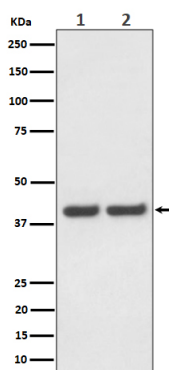
Application	WB, IHC, IF, ICC, IHF
Primary Accession	Q14320
Reactivity	Rat, Human, Mouse
Clonality	Monoclonal
Other Names	fam50a; HXC26; XAP5;
Isotype	Rabbit IgG
Host	Rabbit
Calculated MW	40 KDa

Additional Information

Dilution	WB 1:500~1:2000 IHC 1:50~1:200 ICC/IF 1:50~1:200
Purification	Affinity-chromatography
Immunogen	A synthesized peptide derived from human FAM50A
Description	May be a DNA-binding protein or transcriptional factor.
Storage Condition and Buffer	Rabbit IgG in phosphate buffered saline , pH 7.4, 150mM NaCl, 0.02% sodium azide and 50% glycerol. Store at +4°C short term. Store at -20°C long term. Avoid freeze / thaw cycle.

Protein Information

Images



Western blot analysis of FAM50A expression in (1) HeLa cell lysate; (2) Raw264.7 cell lysate.