

EMC4 Antibody

Rabbit mAb

Catalog # AP93036

Product Information

Application	WB, IHC, IP
Primary Accession	Q5J8M3
Reactivity	Rat, Human, Mouse
Clonality	Monoclonal
Other Names	EMC4; PIG17; tmem85; Transmembrane protein 85;
Isotype	Rabbit IgG
Host	Rabbit
Calculated MW	20087

Additional Information

Dilution	WB 1:500~1:2000 IHC 1:50~1:200 IP 1:50
Purification	Affinity-chromatography
Immunogen	A synthesized peptide derived from human EMC4
Description	May mediate anti-apoptotic activity.
Storage Condition and Buffer	Rabbit IgG in phosphate buffered saline , pH 7.4, 150mM NaCl, 0.02% sodium azide and 50% glycerol. Store at +4°C short term. Store at -20°C long term. Avoid freeze / thaw cycle.

Protein Information

Name	EMC4
Synonyms	TMEM85
Function	<p>Part of the endoplasmic reticulum membrane protein complex (EMC) that enables the energy-independent insertion into endoplasmic reticulum membranes of newly synthesized membrane proteins (PubMed:29242231, PubMed:29809151, PubMed:30415835, PubMed:32439656, PubMed:32459176). Preferentially accommodates proteins with transmembrane domains that are weakly hydrophobic or contain destabilizing features such as charged and aromatic residues (PubMed:29242231, PubMed:29809151, PubMed:30415835). Involved in the cotranslational insertion of multi-pass membrane proteins in which stop-transfer membrane-anchor sequences become ER membrane spanning helices (PubMed:29809151, PubMed:30415835). It is also required for the post-translational insertion of tail-anchored/TA proteins in endoplasmic reticulum membranes (PubMed:29242231, PubMed:29809151). By mediating the proper cotranslational insertion of N-terminal transmembrane domains in an N-exo topology, with translocated N- terminus in the lumen of the ER, controls the topology of multi-pass membrane proteins like the G</p>

protein-coupled receptors (PubMed:[30415835](#)). By regulating the insertion of various proteins in membranes, it is indirectly involved in many cellular processes (Probable).

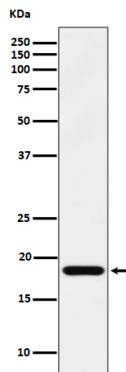
Cellular Location

Endoplasmic reticulum membrane; Multi-pass membrane protein.
Note=Could also be a single-pass transmembrane protein with cytosolic N-terminus and luminal C-terminus.

Tissue Location

Isoform 1 is expressed in brain and heart. Isoform 2 is expressed in heart.

Images



Western blot analysis of EMC4 expression in 293 cell lysate.

Please note: All products are 'FOR RESEARCH USE ONLY. NOT FOR USE IN DIAGNOSTIC OR THERAPEUTIC PROCEDURES'.