

AAMP Antibody

Rabbit mAb

Catalog # AP92989

Product Information

Application	WB, IF, FC, ICC
Primary Accession	Q13685
Reactivity	Rat, Human, Mouse
Clonality	Monoclonal
Other Names	AAMP;

Isotype	Rabbit IgG
Host	Rabbit
Calculated MW	46751

Additional Information

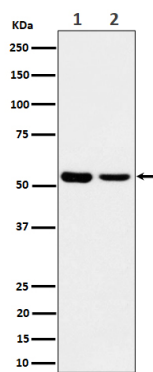
Dilution	WB 1:500~1:2000 ICC/IF 1:50~1:200 FC 1:50
Purification	Affinity-chromatography
Immunogen	A synthesized peptide derived from human AAMP
Description	Plays a role in angiogenesis and cell migration. In smooth muscle cell migration, may act through the RhoA pathway.
Storage Condition and Buffer	Rabbit IgG in phosphate buffered saline , pH 7.4, 150mM NaCl, 0.02% sodium azide and 50% glycerol. Store at +4°C short term. Store at -20°C long term. Avoid freeze / thaw cycle.

Protein Information

Name	AAMP
Function	Plays a role in angiogenesis and cell migration. In smooth muscle cell migration, may act through the RhoA pathway.
Cellular Location	Cell membrane. Cytoplasm.
Tissue Location	Expressed in metastatic melanoma, liver, skin, kidney, heart, lung, lymph node, skeletal muscle and brain, and also in A2058 melanoma cells and activated T-cells (at protein level) Expressed in blood vessels. Strongly expressed in endothelial cells, cytotrophoblasts, and poorly differentiated. colon adenocarcinoma cells found in lymphatics.

Images

Western blot analysis of AAMP expression in (1) A375 lysate; (2) MCF7 cell lysate.



Please note: All products are 'FOR RESEARCH USE ONLY. NOT FOR USE IN DIAGNOSTIC OR THERAPEUTIC PROCEDURES'.