

KCTD9 Antibody

Rabbit mAb

Catalog # AP92986

Product Information

Application	WB, IF, ICC
Primary Accession	Q7L273
Reactivity	Human
Clonality	Monoclonal
Other Names	BTBD27;
Isotype	Rabbit IgG
Host	Rabbit
Calculated MW	42567

Additional Information

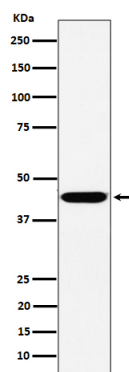
Dilution	WB 1:500~1:2000 ICC/IF 1:50~1:200
Purification	Affinity-chromatography
Immunogen	A synthesized peptide derived from human KCTD9
Description	KCTD9 contains a potassium channel tetramerisation domain. The N-terminal, cytoplasmic tetramerisation domain (T1) of voltage-gated potassium channels encodes molecular determinants for subfamily-specific assembly of alpha-subunits into functional tetrameric channels.
Storage Condition and Buffer	Rabbit IgG in phosphate buffered saline , pH 7.4, 150mM NaCl, 0.02% sodium azide and 50% glycerol. Store at +4°C short term. Store at -20°C long term. Avoid freeze / thaw cycle.

Protein Information

Name	KCTD9
Function	Substrate-specific adapter of a BCR (BTB-CUL3-RBX1) E3 ubiquitin-protein ligase complex, which mediates the ubiquitination of target proteins, leading to their degradation by the proteasome.

Images

Western blot analysis of KCTD9 expression in HepG2 cell lysate.



Please note: All products are 'FOR RESEARCH USE ONLY. NOT FOR USE IN DIAGNOSTIC OR THERAPEUTIC PROCEDURES'.