

IQGAP2 Antibody

Rabbit mAb

Catalog # AP92973

Product Information

Application	WB, IHC
Primary Accession	Q13576
Reactivity	Human
Clonality	Monoclonal
Other Names	Iqgap2;
Isotype	Rabbit IgG
Host	Rabbit
Calculated MW	180578

Additional Information

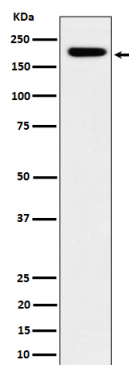
Dilution	WB 1:500~1:2000 IHC 1:50~1:200
Purification	Affinity-chromatography
Immunogen	A synthesized peptide derived from human IQGAP2
Description	Binds to activated CDC42 and RAC1 but does not seem to stimulate their GTPase activity. Associates with calmodulin.
Storage Condition and Buffer	Rabbit IgG in phosphate buffered saline , pH 7.4, 150mM NaCl, 0.02% sodium azide and 50% glycerol. Store at +4°C short term. Store at -20°C long term. Avoid freeze / thaw cycle.

Protein Information

Name	IQGAP2
Function	Binds to activated CDC42 and RAC1 but does not seem to stimulate their GTPase activity. Associates with calmodulin.
Tissue Location	Isoform 2 expression is enhanced in testis.

Images

Western blot analysis of IQGAP2 expression in HepG2 cell lysate.



Please note: All products are 'FOR RESEARCH USE ONLY. NOT FOR USE IN DIAGNOSTIC OR THERAPEUTIC PROCEDURES'.