

AdSS 2 Antibody

Rabbit mAb

Catalog # AP92961

Product Information

Application	WB, IF, FC, ICC
Primary Accession	P30520
Reactivity	Rat, Human, Mouse
Clonality	Monoclonal
Other Names	ADEH; ADSS; AMPSase 2;
Isotype	Rabbit IgG
Host	Rabbit
Calculated MW	50097

Additional Information

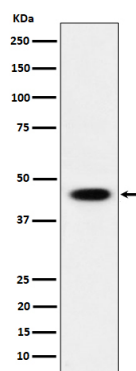
Dilution	WB 1:500~1:2000 ICC/IF 1:50~1:200 FC 1:50
Purification	Affinity-chromatography
Immunogen	A synthesized peptide derived from human AdSS 2
Description	Plays an important role in the de novo pathway and in the salvage pathway of purine nucleotide biosynthesis. Catalyzes the first committed step in the biosynthesis of AMP from IMP.
Storage Condition and Buffer	Rabbit IgG in phosphate buffered saline , pH 7.4, 150mM NaCl, 0.02% sodium azide and 50% glycerol. Store at +4°C short term. Store at -20°C long term. Avoid freeze / thaw cycle.

Protein Information

Name	ADSS2 (HGNC:292)
Function	Plays an important role in the de novo pathway and in the salvage pathway of purine nucleotide biosynthesis. Catalyzes the first committed step in the biosynthesis of AMP from IMP.
Cellular Location	Cytoplasm {ECO:0000255 HAMAP-Rule:MF_03127}. Mitochondrion {ECO:0000250 UniProtKB:A4Z6H1}. Note=Partially associated with particulate fractions

Images

Western blot analysis of AdSS 2 expression in 293 cell lysate.



Please note: All products are 'FOR RESEARCH USE ONLY. NOT FOR USE IN DIAGNOSTIC OR THERAPEUTIC PROCEDURES'.