

KIF5B Antibody

Rabbit mAb

Catalog # AP92934

Product Information

Application	WB, IHC, IF, ICC, IP, IHF
Primary Accession	P33176
Reactivity	Rat, Human, Mouse
Clonality	Monoclonal
Other Names	KIF5B; Kinesin1; KINH; KNS; KNS1; UKHC;
Isotype	Rabbit IgG
Host	Rabbit
Calculated MW	109685

Additional Information

Dilution	WB 1:500~1:2000 IHC 1:50~1:200 ICC/IF 1:50~1:200 IP 1:50
Purification	Affinity-chromatography
Immunogen	A synthesized peptide derived from human KIF5B
Description	Microtubule-dependent motor required for normal distribution of mitochondria and lysosomes.
Storage Condition and Buffer	Rabbit IgG in phosphate buffered saline , pH 7.4, 150mM NaCl, 0.02% sodium azide and 50% glycerol. Store at +4°C short term. Store at -20°C long term. Avoid freeze / thaw cycle.

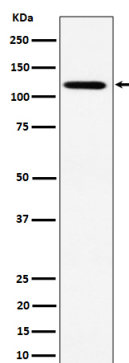
Protein Information

Name	KIF5B (HGNC:6324)
Synonyms	KNS, KNS1
Function	Microtubule-dependent motor required for normal distribution of mitochondria and lysosomes. Can induce formation of neurite-like membrane protrusions in non-neuronal cells in a ZFYVE27-dependent manner (By similarity). Regulates centrosome and nuclear positioning during mitotic entry. During the G2 phase of the cell cycle in a BICD2- dependent manner, antagonizes dynein function and drives the separation of nuclei and centrosomes (PubMed: 20386726). Required for anterograde axonal transportation of MAPK8IP3/JIP3 which is essential for MAPK8IP3/JIP3 function in axon elongation (By similarity). Through binding with PLEKHM2 and ARL8B, directs lysosome movement toward microtubule plus ends (Probable). Involved in NK cell-mediated cytotoxicity. Drives the polarization of cytolytic granules and microtubule-organizing centers (MTOCs) toward the immune synapse between effector NK lymphocytes and target cells (PubMed: 24088571).

Cellular Location

Cytoplasm, cytoskeleton {ECO:0000250|UniProtKB:Q2PQA9}. Cytolytic granule membrane. Lysosome membrane; Peripheral membrane protein; Cytoplasmic side Note=Uniformly distributed between soma and neurites in hippocampal neurons. {ECO:0000250|UniProtKB:Q2PQA9}

Images



Western blot analysis of KIF5B expression in HeLa cell lysate.

Please note: All products are 'FOR RESEARCH USE ONLY. NOT FOR USE IN DIAGNOSTIC OR THERAPEUTIC PROCEDURES'.