

CYFIP1 Antibody

Rabbit mAb

Catalog # AP92929

Product Information

Application	WB, IF, FC, ICC
Primary Accession	Q7L576
Reactivity	Rat, Human, Mouse
Clonality	Monoclonal
Other Names	CYFIP1; P140SRA1; SHYC; SRA1;
Isotype	Rabbit IgG
Host	Rabbit
Calculated MW	145182

Additional Information

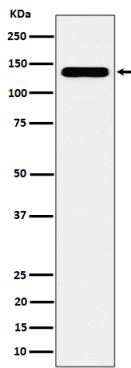
Dilution	WB 1:500~1:2000 ICC/IF 1:50~1:200 FC 1:50
Purification	Affinity-chromatography
Immunogen	A synthesized peptide derived from human CYFIP1
Description	Component of the CYFIP1-EIF4E-FMR1 complex which binds to the mRNA cap and mediates translational repression. In the CYFIP1-EIF4E-FMR1 complex this subunit is an adapter between EIF4E and FMR1. Promotes the translation repression activity of FMR1 in brain probably by mediating its association with EIF4E and mRNA (By similarity).
Storage Condition and Buffer	Rabbit IgG in phosphate buffered saline , pH 7.4, 150mM NaCl, 0.02% sodium azide and 50% glycerol. Store at +4°C short term. Store at -20°C long term. Avoid freeze / thaw cycle.

Protein Information

Name	CYFIP1 (HGNC:13759)
Function	Component of the CYFIP1-EIF4E-FMR1 complex which binds to the mRNA cap and mediates translational repression. In the CYFIP1-EIF4E- FMR1 complex this subunit is an adapter between EIF4E and FMR1. Promotes the translation repression activity of FMR1 in brain probably by mediating its association with EIF4E and mRNA (By similarity). Regulates formation of membrane ruffles and lamellipodia. Plays a role in axon outgrowth. Binds to F-actin but not to RNA. Part of the WAVE complex that regulates actin filament reorganization via its interaction with the Arp2/3 complex. Actin remodeling activity is regulated by RAC1. Regulator of epithelial morphogenesis. As component of the WAVE1 complex, required for BDNF-NTRK2 endocytic trafficking and signaling from early endosomes (By similarity). May act as an invasion suppressor in cancers.
Cellular Location	Cytoplasm {ECO:0000250 UniProtKB:Q7TMB8}. Cytoplasm, perinuclear region

{ECO:0000250|UniProtKB:Q7TMB8}. Cell projection, lamellipodium
{ECO:0000250|UniProtKB:Q7TMB8}. Cell projection, ruffle
{ECO:0000250|UniProtKB:Q7TMB8}. Synapse, synaptosome
{ECO:0000250|UniProtKB:Q7TMB8}. Note=Highly expressed in the perinuclear region (By similarity). Enriched in synaptosomes (By similarity). Also enriched in membrane ruffles and at the tips of lamellipodia (By similarity). {ECO:0000250|UniProtKB:Q7TMB8}

Images



Western blot analysis of CYFIP1 expression in HeLa cell lysate.

Please note: All products are 'FOR RESEARCH USE ONLY. NOT FOR USE IN DIAGNOSTIC OR THERAPEUTIC PROCEDURES'.