

MPP1 Antibody

Rabbit mAb

Catalog # AP92891

Product Information

Application	WB
Primary Accession	Q00013
Reactivity	Human
Clonality	Monoclonal
Other Names	AAG12; DXS552; DXS552E; EMP55; Membrane protein palmitoylated 1; MPP1; MRG1; p55; palmitoylated 1; PEMP;
Isotype	Rabbit IgG
Host	Rabbit
Calculated MW	52296

Additional Information

Dilution	WB 1:500~1:2000
Purification	Affinity-chromatography
Immunogen	A synthesized peptide derived from human MPP1
Description	Essential regulator of neutrophil polarity. Regulates neutrophil polarization by regulating AKT1 phosphorylation through a mechanism that is independent of PIK3CG activity.
Storage Condition and Buffer	Rabbit IgG in phosphate buffered saline , pH 7.4, 150mM NaCl, 0.02% sodium azide and 50% glycerol. Store at +4°C short term. Store at -20°C long term. Avoid freeze / thaw cycle.

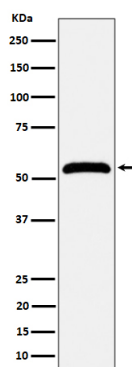
Protein Information

Name	MPP1
Synonyms	DXS552E, EMP55
Function	Essential regulator of neutrophil polarity. Regulates neutrophil polarization by regulating AKT1 phosphorylation through a mechanism that is independent of PIK3CG activity (By similarity).
Cellular Location	Cell membrane; Lipid-anchor. Cell projection, stereocilium {ECO:0000250 UniProtKB:P70290}. Note=Colocalizes with WHRN at stereocilium tip during hair cell development (By similarity) Colocalizes with PALS1 in the retina, at the outer limiting membrane (OLM) (By similarity). Colocalizes with WHRN in the retina, at the outer limiting membrane (OLM), outer plexiform layer (OPL), basal bodies and at the connecting cilium (CC) (By similarity). Colocalizes with NF2 in non-myelin-forming Schwann cells (PubMed:19144871) {ECO:0000250 UniProtKB:P70290, ECO:0000269 PubMed:19144871}

Tissue Location

Ubiquitous..

Images



Western blot analysis of MPP1 expression in Jurkat cell lysate.

Please note: All products are 'FOR RESEARCH USE ONLY. NOT FOR USE IN DIAGNOSTIC OR THERAPEUTIC PROCEDURES'.