

DENN Antibody

Rabbit mAb

Catalog # AP92890

Product Information

Application	WB, IHC
Primary Accession	Q8WXG6
Reactivity	Rat, Human, Mouse
Clonality	Monoclonal
Other Names	IG20; MADD; RAB3GEP;
Isotype	Rabbit IgG
Host	Rabbit
Calculated MW	183303

Additional Information

Dilution	WB 1:500~1:2000 IHC 1:50~1:200
Purification	Affinity-chromatography
Immunogen	A synthesized peptide derived from human DENN
Description	Plays a significant role in regulating cell proliferation, survival and death through alternative mRNA splicing. Isoform 5 shows increased cell proliferation and isoform 2 shows decreased. Converts GDP-bound inactive form of RAB3A, RAB3C and RAB3D to the GTP-bound active forms.
Storage Condition and Buffer	Rabbit IgG in phosphate buffered saline , pH 7.4, 150mM NaCl, 0.02% sodium azide and 50% glycerol. Store at +4°C short term. Store at -20°C long term. Avoid freeze / thaw cycle.

Protein Information

Name	MADD {ECO:0000312 EMBL:AAB57735.1, ECO:0000312 HGNC:HGNC:6766}
Function	Guanyl-nucleotide exchange factor that regulates small GTPases of the Rab family (PubMed: 18559336 , PubMed: 20937701). Converts GDP-bound inactive form of RAB27A and RAB27B to the GTP-bound active forms (PubMed: 18559336 , PubMed: 20937701). Converts GDP-bound inactive form of RAB3A, RAB3C and RAB3D to the GTP-bound active forms, GTPases involved in synaptic vesicle exocytosis and vesicle secretion (By similarity). Plays a role in synaptic vesicle formation and in vesicle trafficking at the neuromuscular junction (By similarity). Involved in up-regulating a post-docking step of synaptic exocytosis in central synapses (By similarity). Probably by binding to the motor proteins KIF1B and KIF1A, mediates motor-dependent transport of GTP-RAB3A- positive vesicles to the presynaptic nerve terminals (By similarity). Plays a role in TNFA-mediated activation of the MAPK pathway, including ERK1/2 (PubMed: 32761064). May link TNFRSF1A with MAP kinase activation (PubMed: 9115275). May be involved in the regulation of TNFA-induced apoptosis (PubMed: 11577081 ,

PubMed:[32761064](#)).

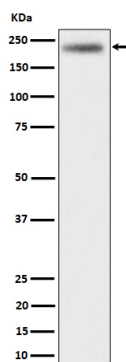
Cellular Location

Cell membrane. Cytoplasm. Cell projection, axon
{ECO:0000250|UniProtKB:Q80U28}

Tissue Location

Expressed in testis, ovary, brain and heart (PubMed:8988362). Expressed in spleen, thymus, prostate, testis, ovary, small intestine and colon (PubMed:9115275). Expressed in liver (PubMed:9796103). [Isoform 2]: Expressed in the brain, breast, kidney, lung, ovary, pancreas, testis, uterus, stomach and thyroid [Isoform 4]: Expressed in the brain, breast, kidney, lung, ovary, pancreas, testis, uterus, stomach and thyroid [Isoform 6]: Not detected in the brain, breast, kidney, lung, ovary, pancreas, testis, uterus, stomach and thyroid

Images



Western blot analysis of DENN expression in HeLa cell lysate.

Please note: All products are 'FOR RESEARCH USE ONLY. NOT FOR USE IN DIAGNOSTIC OR THERAPEUTIC PROCEDURES'.