

GRSF1 Antibody

Rabbit mAb

Catalog # AP92855

Product Information

Application	WB, IF, FC, ICC, IP
Primary Accession	Q12849
Reactivity	Rat, Human, Mouse
Clonality	Monoclonal
Other Names	G rich RNA sequence binding factor 1; G rich sequence binding factor 1; GRSF1;
Isotype	Rabbit IgG
Host	Rabbit
Calculated MW	53126

Additional Information

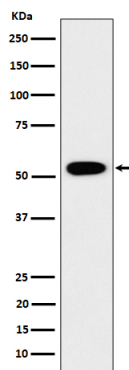
Dilution	WB 1:500~1:2000 ICC/IF 1:50~1:200 IP 1:50 FC 1:50
Purification	Affinity-chromatography
Immunogen	A synthesized peptide derived from human GRSF1
Description	Regulator of post-transcriptional mitochondrial gene expression, required for assembly of the mitochondrial ribosome and for recruitment of mRNA and lncRNA.
Storage Condition and Buffer	Rabbit IgG in phosphate buffered saline , pH 7.4, 150mM NaCl, 0.02% sodium azide and 50% glycerol. Store at +4°C short term. Store at -20°C long term. Avoid freeze / thaw cycle.

Protein Information

Name	GRSF1
Function	Regulator of post-transcriptional mitochondrial gene expression, required for assembly of the mitochondrial ribosome and for recruitment of mRNA and lncRNA. Binds RNAs containing the 14 base G- rich element. Preferentially binds RNAs transcribed from three contiguous genes on the light strand of mtDNA, the ND6 mRNA, and the long non-coding RNAs for MT-CYB and MT-ND5, each of which contains multiple consensus binding sequences (PubMed: 23473033 , PubMed: 23473034 , PubMed: 29967381). Involved in the degradosome-mediated decay of non- coding mitochondrial transcripts (MT-ncRNA) and tRNA-like molecules (PubMed: 29967381). Acts by unwinding G-quadruplex RNA structures in MT- ncRNA, thus facilitating their degradation by the degradosome (PubMed: 29967381). G-quadruplexes (G4) are non-canonical 4 stranded structures formed by transcripts from the light strand of mtDNA (PubMed: 29967381).
Cellular Location	[Isoform 1]: Mitochondrion matrix Note=Localizes to mitochondrial RNA

granules found in close proximity to the mitochondrial nucleoids.

Images



Western blot analysis of GRSF1 expression in 293 cell lysate.

Please note: All products are 'FOR RESEARCH USE ONLY. NOT FOR USE IN DIAGNOSTIC OR THERAPEUTIC PROCEDURES'.