

MAP3K4 Antibody

Rabbit mAb

Catalog # AP92845

Product Information

Application	WB, IHC
Primary Accession	Q9Y6R4
Reactivity	Human
Clonality	Monoclonal
Other Names	MAP three kinase 1; MAP/ERK kinase kinase 4; MAP3K4; MAPK/ERK kinase kinase 4; MAPKKK4; MEK kinase 4; MEKK4; Mitogen-activated protein kinase kinase kinase 4; MTK1; predicted protein of HQ0412; PRO0412;
Isotype	Rabbit IgG
Host	Rabbit
Calculated MW	181685

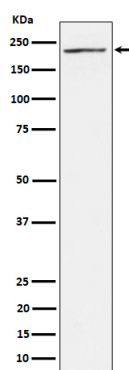
Additional Information

Dilution	WB 1:500~1:2000 IHC 1:50~1:200
Purification	Affinity-chromatography
Immunogen	A synthesized peptide derived from human MAP3K4
Description	Component of a protein kinase signal transduction cascade. Activates the CSBP2, P38 and JNK MAPK pathways, but not the ERK pathway. Specifically phosphorylates and activates MAP2K4 and MAP2K6.
Storage Condition and Buffer	Rabbit IgG in phosphate buffered saline , pH 7.4, 150mM NaCl, 0.02% sodium azide and 50% glycerol. Store at +4°C short term. Store at -20°C long term. Avoid freeze / thaw cycle.

Protein Information

Name	MAP3K4
Synonyms	KIAA0213, MAPKKK4, MEKK4, MTK1
Function	Component of a protein kinase signal transduction cascade. Activates the CSBP2, P38 and JNK MAPK pathways, but not the ERK pathway. Specifically phosphorylates and activates MAP2K4 and MAP2K6.
Cellular Location	Cytoplasm, perinuclear region. Note=Localized in perinuclear vesicular-like structures, probably Golgi-associated vesicles.
Tissue Location	Expressed at high levels in heart, placenta, skeletal muscle and pancreas, and at lower levels in other tissues

Images



Western blot analysis of MAP3K4 expression in 293T cell lysate.

Please note: All products are 'FOR RESEARCH USE ONLY. NOT FOR USE IN DIAGNOSTIC OR THERAPEUTIC PROCEDURES'.