

ICAM2 / CD102 Antibody

Rabbit mAb

Catalog # AP92831

Product Information

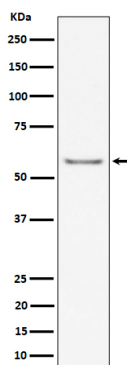
Application	WB, IHC, IP
Primary Accession	P35330(mouse)(human:P13598)
Reactivity	Mouse
Clonality	Monoclonal
Other Names	CD102; CD102 antigen; ICAM 2; Intercellular adhesion molecule 2; Ly60;
Isotype	Rabbit IgG
Host	Rabbit
Calculated MW	60 KDa

Additional Information

Dilution	WB 1:500~1:2000 IHC 1:50~1:200 IP 1:50
Purification	Affinity-chromatography
Immunogen	A synthesized peptide derived from human ICAM2 / CD102
Description	May play a role in lymphocyte recirculation by blocking LFA1 dependent cell adhesion. Mediates adhesive interactions important for antigen specific immune response, NK cell mediated clearance, lymphocyte recirculation, and other cellular interactions important for immune response and surveillance.
Storage Condition and Buffer	Rabbit IgG in phosphate buffered saline , pH 7.4, 150mM NaCl, 0.02% sodium azide and 50% glycerol. Store at +4°C short term. Store at -20°C long term. Avoid freeze / thaw cycle.

Protein Information

Images



Western blot analysis of ICAM2 / CD102 expression in mouse heart cell lysate.

Please note: All products are 'FOR RESEARCH USE ONLY. NOT FOR USE IN DIAGNOSTIC OR THERAPEUTIC PROCEDURES'.