

IL-33 Antibody

Rabbit mAb

Catalog # AP92818

Product Information

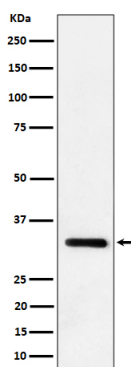
Application	WB, IHC, IF, ICC, IHF
Primary Accession	Q8BVZ5(mouse)(human:O95760)
Reactivity	Rat, Mouse
Clonality	Monoclonal
Other Names	DVS27; IL 1F11 ;IL 33; IL1F11; IL33; Interleukin 1 family member 11; Interleukin 33; Interleukin 33 precursor; Interleukin33; NFEHEV; NFHEV;
Isotype	Rabbit IgG
Host	Rabbit
Calculated MW	33 KDa

Additional Information

Dilution	WB 1:500~1:2000 IHC 1:50~1:200 ICC/IF 1:50~1:200
Purification	Affinity-chromatography
Immunogen	A synthesized peptide derived from human IL-33
Description	Cytokine that binds to and signals through the IL1RL1/ST2 receptor which in turn activates NF-kappa-B and MAPK signaling pathways in target cells (PubMed:16286016). Involved in the maturation of Th2 cells inducing the secretion of T-helper type 2-associated cytokines.
Storage Condition and Buffer	Rabbit IgG in phosphate buffered saline , pH 7.4, 150mM NaCl, 0.02% sodium azide and 50% glycerol. Store at +4°C short term. Store at -20°C long term. Avoid freeze / thaw cycle.

Protein Information

Images



Western blot analysis of IL-33 expression in mouse lung cell lysate.

Please note: All products are 'FOR RESEARCH USE ONLY. NOT FOR USE IN DIAGNOSTIC OR THERAPEUTIC PROCEDURES'.