

# ALS2CR1 Antibody

Rabbit mAb

Catalog # AP92812

## Product Information

---

<b>Application</b>	WB, IF, ICC
<b>Primary Accession</b>	<a href="#">Q9GZT8</a>
<b>Reactivity</b>	Human
<b>Clonality</b>	Monoclonal
<b>Other Names</b>	ALS2CR1; Nif3l1;

<b>Isotype</b>	Rabbit IgG
<b>Host</b>	Rabbit
<b>Calculated MW</b>	41968

## Additional Information

---

<b>Dilution</b>	WB 1:500~1:2000 ICC/IF 1:50~1:200
<b>Purification</b>	Affinity-chromatography
<b>Immunogen</b>	A synthesized peptide derived from human ALS2CR1
<b>Description</b>	May function as a transcriptional corepressor through its interaction with COPS2, negatively regulating the expression of genes involved in neuronal differentiation.
<b>Storage Condition and Buffer</b>	Rabbit IgG in phosphate buffered saline , pH 7.4, 150mM NaCl, 0.02% sodium azide and 50% glycerol. Store at +4°C short term. Store at -20°C long term. Avoid freeze / thaw cycle.

## Protein Information

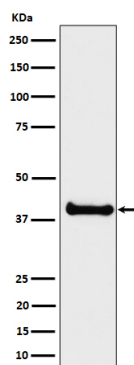
---

<b>Name</b>	NIF3L1 ( <a href="#">HGNC:13390</a> )
<b>Function</b>	May function as a transcriptional corepressor through its interaction with COPS2, negatively regulating the expression of genes involved in neuronal differentiation.
<b>Cellular Location</b>	Cytoplasm. Nucleus {ECO:0000250 UniProtKB:Q9EQ80} Note=Interaction with COPS2 may regulate localization to the nucleus {ECO:0000250 UniProtKB:Q9EQ80}

## Images

---

Western blot analysis of ALS2CR1 expression in LNCaP cell lysate.



Please note: All products are 'FOR RESEARCH USE ONLY. NOT FOR USE IN DIAGNOSTIC OR THERAPEUTIC PROCEDURES'.