

ALDH16A1 Antibody

Rabbit mAb

Catalog # AP92804

Product Information

Application	WB, IHC
Primary Accession	Q8IZ83
Reactivity	Rat, Human, Mouse
Clonality	Monoclonal
Other Names	Aldh16a1;
Isotype	Rabbit IgG
Host	Rabbit
Calculated MW	85127

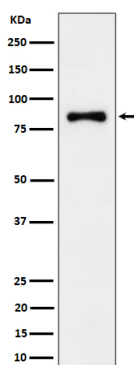
Additional Information

Dilution	WB 1:500~1:2000 IHC 1:50~1:200
Purification	Affinity-chromatography
Immunogen	A synthesized peptide derived from human ALDH16A1
Description	This gene encodes a member of the aldehyde dehydrogenase superfamily. The family members act on aldehyde substrates and use nicotinamide adenine dinucleotide phosphate (NADP) as a cofactor.
Storage Condition and Buffer	Rabbit IgG in phosphate buffered saline , pH 7.4, 150mM NaCl, 0.02% sodium azide and 50% glycerol. Store at +4°C short term. Store at -20°C long term. Avoid freeze / thaw cycle.

Protein Information

Name	ALDH16A1
-------------	----------

Images



Western blot analysis of ALDH16A1 expression in Jurkat cell lysate.

Please note: All products are 'FOR RESEARCH USE ONLY. NOT FOR USE IN DIAGNOSTIC OR THERAPEUTIC PROCEDURES'.