

GRAF Antibody

Rabbit mAb

Catalog # AP92786

Product Information

| | |
|--------------------------|-------------------------------|
| Application | WB, IHC |
| Primary Accession | Q9UNA1 |
| Reactivity | Rat, Human, Mouse |
| Clonality | Monoclonal |
| Other Names | GRAF; GRAF1; OPHN1L; OPHN1L1; |
| Isotype | Rabbit IgG |
| Host | Rabbit |
| Calculated MW | 92235 |

Additional Information

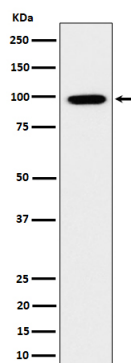
| | |
|-------------------------------------|---|
| Dilution | WB 1:500~1:2000 IHC 1:50~1:200 |
| Purification | Affinity-chromatography |
| Immunogen | A synthesized peptide derived from human GRAF |
| Description | GTPase-activating protein for RHOA and CDC42. |
| Storage Condition and Buffer | Rabbit IgG in phosphate buffered saline , pH 7.4, 150mM NaCl, 0.02% sodium azide and 50% glycerol. Store at +4°C short term. Store at -20°C long term. Avoid freeze / thaw cycle. |

Protein Information

| | |
|--------------------------|---|
| Name | ARHGAP26 |
| Synonyms | GRAF, KIAA0621, OPHN1L |
| Function | GTPase-activating protein for RHOA and CDC42. Facilitates mitochondrial quality control by promoting Parkin-mediated recruitment of autophagosomes to damaged mitochondria (PubMed: 38081847). Negatively regulates the growth of human parainfluenza virus type 2 by inhibiting hPIV-2-mediated RHOA activation via interaction with two of its viral proteins P and V (PubMed: 27512058). |
| Cellular Location | [Isoform 2]: Endosome membrane. Note=Colocalized with RAB8A, RAB8B and RAB10 on endosomal tubules. |

Images

Western blot analysis of GRAF expression in HeLa cell lysate.



Please note: All products are 'FOR RESEARCH USE ONLY. NOT FOR USE IN DIAGNOSTIC OR THERAPEUTIC PROCEDURES'.