

MYL12B Antibody

Rabbit mAb

Catalog # AP92783

Product Information

| | |
|--------------------------|---------------------------------------|
| Application | WB, IHC, IF, ICC, IHF |
| Primary Accession | O14950 |
| Reactivity | Rat, Human, Mouse |
| Clonality | Monoclonal |
| Other Names | MLC 2A; MLC20; MRLC2; MYL12B; MYLC2B; |
| Isotype | Rabbit IgG |
| Host | Rabbit |
| Calculated MW | 19779 |

Additional Information

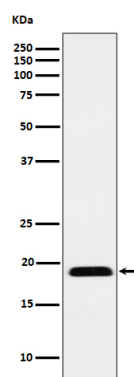
| | |
|-------------------------------------|---|
| Dilution | WB 1:500~1:2000 IHC 1:50~1:200 ICC/IF 1:50~1:200 |
| Purification | Affinity-chromatography |
| Immunogen | A synthesized peptide derived from human MYL12B |
| Description | Myosin regulatory subunit that plays an important role in regulation of both smooth muscle and nonmuscle cell contractile activity via its phosphorylation. |
| Storage Condition and Buffer | Rabbit IgG in phosphate buffered saline , pH 7.4, 150mM NaCl, 0.02% sodium azide and 50% glycerol. Store at +4°C short term. Store at -20°C long term. Avoid freeze / thaw cycle. |

Protein Information

| | |
|------------------------|--|
| Name | MYL12B |
| Synonyms | MRLC2, MYLC2B |
| Function | Myosin regulatory subunit that plays an important role in regulation of both smooth muscle and nonmuscle cell contractile activity via its phosphorylation. Phosphorylation triggers actin polymerization in vascular smooth muscle. Implicated in cytokinesis, receptor capping, and cell locomotion. |
| Tissue Location | Ubiquitously expressed in various hematopoietic cells. |

Images

Western blot analysis of MYL12B expression in Jurkat cell lysate.



Please note: All products are 'FOR RESEARCH USE ONLY. NOT FOR USE IN DIAGNOSTIC OR THERAPEUTIC PROCEDURES'.